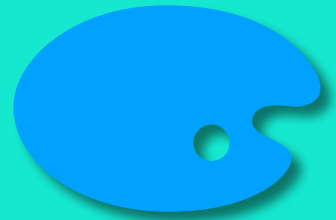


# 2022 Creative Workshops with Amy Wynne

More details @ [www.amywynne.com/blog](http://www.amywynne.com/blog)



## JANUARY

### Figure Drawing Bootcamp: Essential Structure and Proportion

Three Day Workshop: January 14, 15, 16

Friday: 1 to 3pm. Saturday & Sunday via ZOOM 10am 12pm & 1-3 pm

Register Through The Currier Museum @ [currier.org](http://currier.org)

## MARCH

### The March Project

5 Meetings 1-3pm via ZOOM: February 28th, March 7th, 14th, 21st & April 1st (**SOLD OUT**)

**NEW MORNING SECTION:** 10am-12pm: February 28th, March 7th, 14th, 21st & April 2nd

Register @ [amyelizabethwynne11@gmail.com](mailto:amyelizabethwynne11@gmail.com)

### Reconnecting with the Natural World: Elemental Landscape

5 Wednesdays 1-3pm via ZOOM: March 2nd, 9th, 16th, 23rd & 30th

Register Through The Concord Art Association @ [concordart.org](http://concordart.org)

## APRIL

### Landscape Sketching: Simplification & Value

5 Fridays 10am-12pm via ZOOM: April 1st, 8th, 15th, 22nd & 29th

Register Through the Currier Museum @ [currier.org](http://currier.org)

## MAY

### Re-Wilding: Embodying the Natural World through Drawing & Meditation (In Person)

Wednesday, Thursday & Friday May 4th, 5th & 6th (10am-2pm)

Register Through The Concord Art Association @ [concordart.org](http://concordart.org)

## JULY

### Color Theory: A Crash Course

Monday - Friday July 11th-15th via ZOOM 1-3pm

Register Through the Currier Museum @ [currier.org](http://currier.org)

## AUGUST

### Simplifying Landscape: Temporality & Color: The Quick Sketch

Monday - Friday August 1st-5th, 9-11am EST

Monday, Wednesday & Friday via ZOOM/Tuesday & Thursday - Painting Days

Register Through The Truro Center for the Arts at Castle Hill @ [castlehill.org](http://castlehill.org)

## **The August Project**

5 Meetings: Friday July 29th, August 8th, 15th, 22nd & September 1st, 1-3pm via ZOOM

Register @ [amyelizabethwynne11@gmail.com](mailto:amyelizabethwynne11@gmail.com)

## **SEPTEMBER**

### **Drawing as Meditation (In Person)**

Sept 15th-18th

Register Through Snow Farm: New England Craft Program @ [snowfarm.org](http://snowfarm.org)

### **Plein Air Painting: From On-Site to the Studio (In Person)**

Sept 22nd -25th

Register Through Snow Farm: New England Craft Program @ [snowfarm.org](http://snowfarm.org)

## **OCTOBER (Pending in Italy)**

### **Painting & Sketching Colorful Topographies: The Maremma: Southern Tuscany**

October 1st-8th 2022

Due to global health concerns, I will confirm this workshop April 1st 2022.

Hosted by Pieve di Caminino Historic Agriturismo @ [www.caminino.eu](http://www.caminino.eu)

Inquiries @ [amyelizabethwynne11@gmail.com](mailto:amyelizabethwynne11@gmail.com)

### **Landscape Collage Into Painting: Clean Color & Sculptural Form**

M-F October 24th-28th via ZOOM 10am-12pm

Register Through The Concord Art Association @ [concordart.org](http://concordart.org)

## **DECEMBER**

### **Breaking Through to Fearless Abstraction**

M-F December 5th - December 9th via ZOOM 10am-12pm

Register Through The Concord Art Association @ [concordart.org](http://concordart.org)

## **JANUARY 2023**

### **The January Project (Dates TBA)**

*Hope to work with you in 2022!!!*

*With gratitude for our continued connection.*

*Amy*

**Contact:** [amyelizabethwynne11@gmail.com](mailto:amyelizabethwynne11@gmail.com)

**Website:** [www.amywynne.com/blog](http://www.amywynne.com/blog)

